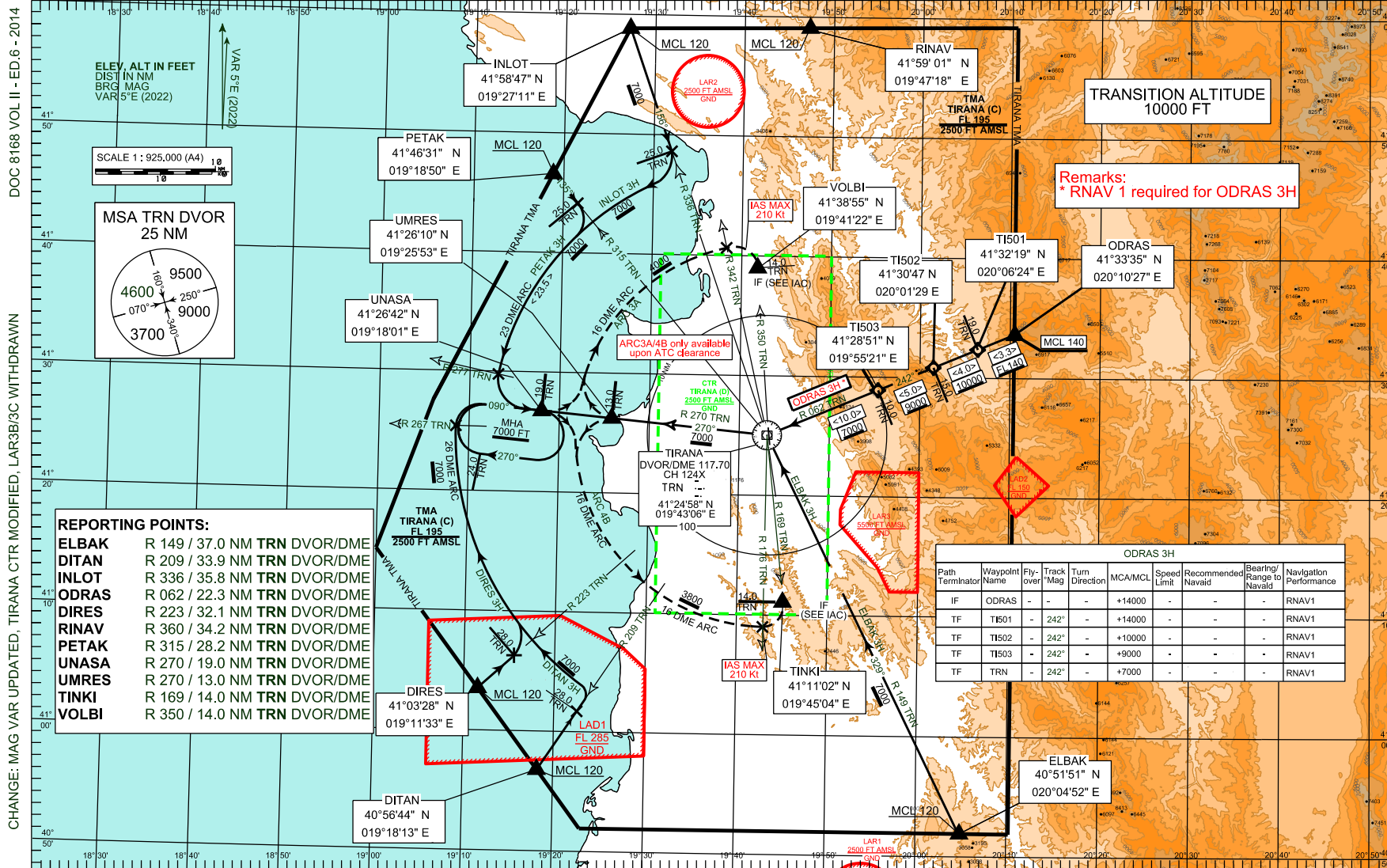


STANDARD ARRIVAL CHART AERODROME ELEVATION 125 FT
INSTRUMENT (STAR) - ICAO HEIGHTS RELATED TO
AD ELEV 125 FT

TWR	122.500	APP	133.150	ACC	127.500	ATIS	
	123.500		136.350		136.350	132.275	

TIRANA, LATI
STAR RWY 17/35



REPORTING POINTS:

ELBAK	R 149 / 37.0 NM TRN DVOR/DME
DITAN	R 209 / 33.9 NM TRN DVOR/DME
INLOT	R 336 / 35.8 NM TRN DVOR/DME
ODRAS	R 062 / 22.3 NM TRN DVOR/DME
DIRES	R 223 / 32.1 NM TRN DVOR/DME
RINAV	R 360 / 34.2 NM TRN DVOR/DME
PETAK	R 315 / 28.2 NM TRN DVOR/DME
UNASA	R 270 / 19.0 NM TRN DVOR/DME
UMRES	R 270 / 13.0 NM TRN DVOR/DME
TINKI	R 169 / 14.0 NM TRN DVOR/DME
VOLBI	R 350 / 14.0 NM TRN DVOR/DME

ODRAS 3H

Path Terminator	Waypoint Name	Fly-over	Track Mag	Turn Direction	MCA/MCL	Speed Limit	Recommended Navaid	Bearing/Range to Navaid	Navigation Performance
IF	ODRAS	-	-	-	+14000	-	-	-	RNAV1
TF	TI501	-	242°	-	+14000	-	-	-	RNAV1
TF	TI502	-	242°	-	+10000	-	-	-	RNAV1
TF	TI503	-	242°	-	+9000	-	-	-	RNAV1
TF	TRN	-	242°	-	+7000	-	-	-	RNAV1

THIS PAGE INTENTIONALLY LEFT BLANK