

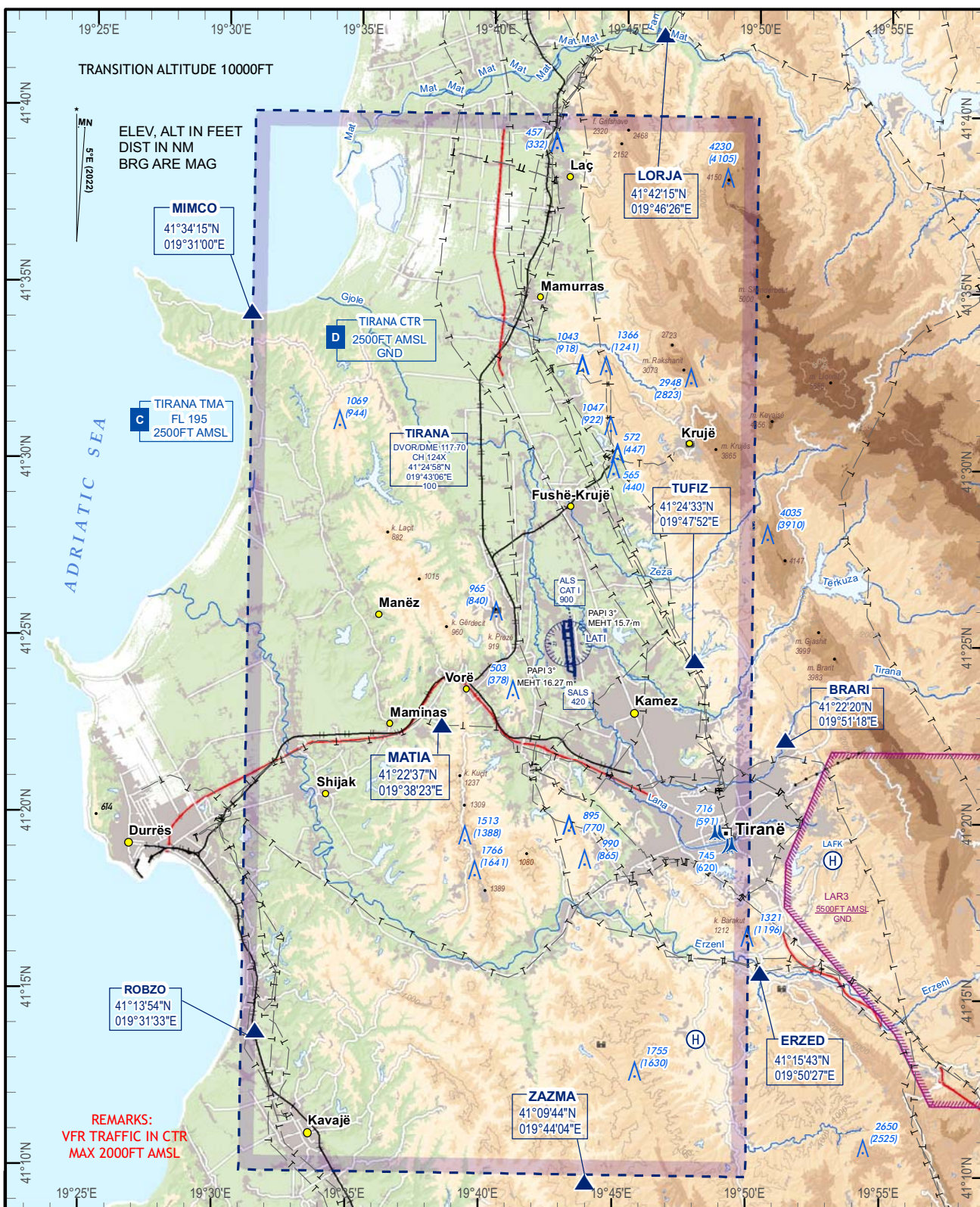
VISUAL APPROACH CHART - ICAO

AD ELEV 125 FT

ARP 412453N 0194314E

ATIS	132.275
TWR	122.500
	123.500

TIRANA LATI



TRANSITION ALTITUDE 10000FT

ELEV, ALT IN FEET
DIST IN NM
BRG ARE MAG

MIMCO
41°34'15"N
019°31'00"E

TIRANA TMA
FL 195
2500FT AMSL

TIRANA CTR
2500FT AMSL
GND

TIRANA
DVR/DME 117.70
CH 124X
41°24'58"N
019°43'06"E
100

LORJA
41°42'15"N
019°46'26"E

TUFIZ
41°24'33"N
019°47'52"E

MATIA
41°22'37"N
019°38'23"E

BRARI
41°22'20"N
019°51'18"E

ROBZO
41°13'54"N
019°31'33"E

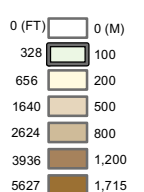
ZAZMA
41°09'44"N
019°44'04"E

ERZED
41°15'43"N
019°50'27"E

REMARKS:
VFR TRAFFIC IN CTR
MAX 2000FT AMSL



1:300.000 (A4)



VFR flights intending to enter Tirana CTR from uncontrolled airspace shall establish, as soon as practicable, two-way RTF communication with Tirana Tower on the appropriate frequency prior to entering Tirana CTR

CONTOUR INTERVAL 1000 FT

- ▲ VISUAL REPORTING POINT
- △ VISUAL HOLDING GATES: ATC CLEARANCE SHALL BE REQUESTED BEFORE CROSSING LATI AERODROME

- 745 ELEVATION (620) (HEIGHT REL TO AD ELEVATION)
- T — T — TRANSMISSION LINES
- — ● — CABLE CAR

THIS PAGE INTENTIONALLY LEFT BLANK