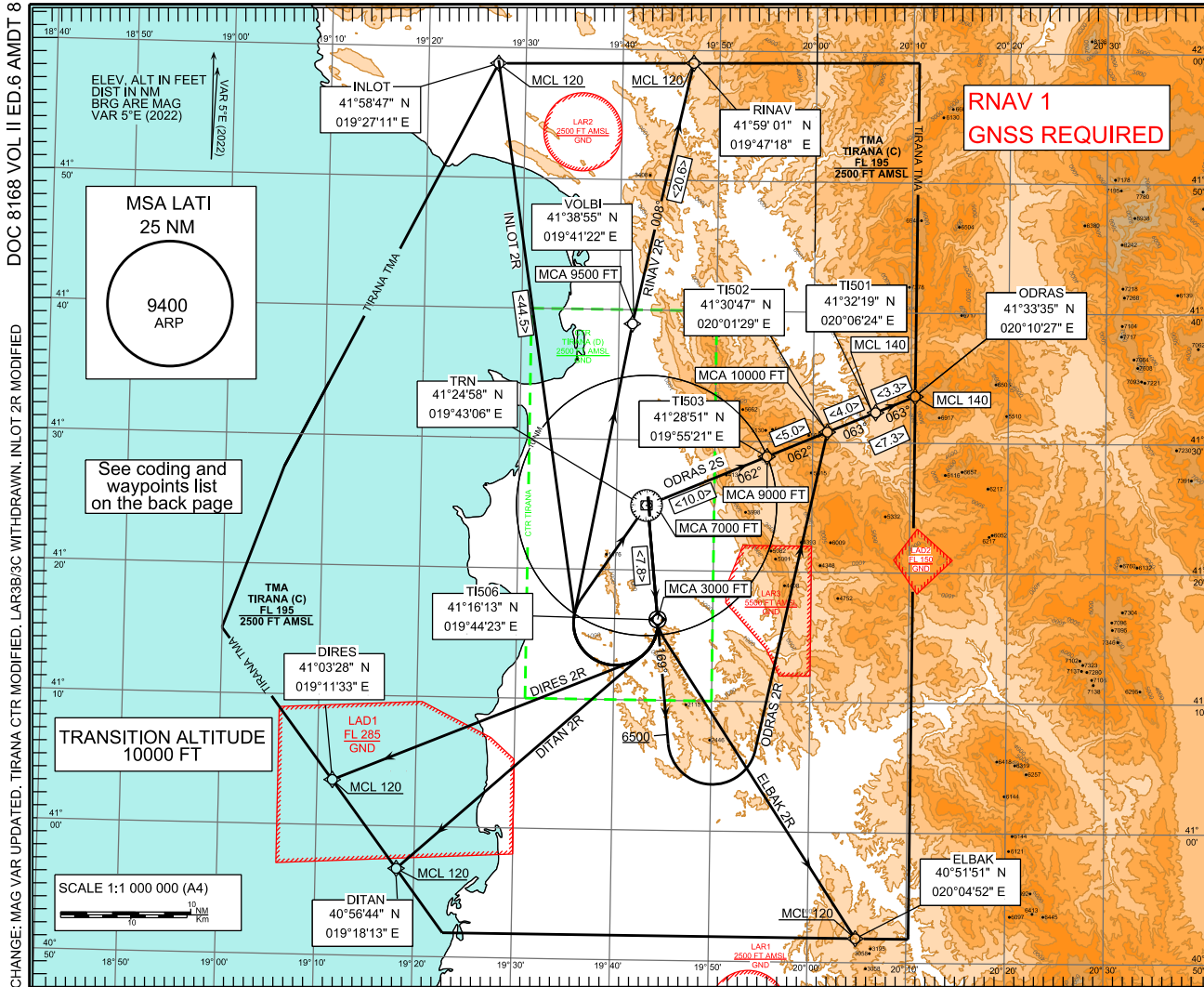


STANDARD DEPARTURE CHART -  
INSTRUMENT (SID) - ICAO

AERODROME ELEVATION 125 FT  
HEIGHTS RELATED TO  
THR 17 ELEV 109 FT

TWR	122.500	APP	133.150	ACC	127.500	ATIS	
	123.500		136.350		136.350	132.275	

TIRANA, LATI  
RNAV SID  
RWY17



**ODRAS 2R**

After take-off climb on course 169° until 6500 ft, turn LEFT DCT TI502 above 10000 ft, then continue on track 063° to ODRAS at or above FL140.

Requires a minimum climb gradient of 6.0% (365 ft/NM) till passing 6500 ft.

**DIRES 2R**

After take-off climb on course 169° until TI506 at or above 3000 ft, then turn RIGHT DCT DIRES at or above FL120.

Requires a minimum climb gradient of 6.0% (365 ft/NM) till passing FL120.

**DITAN 2R**

After take-off climb on course 169° until TI506 at or above 3000 ft, then turn RIGHT DCT DITAN at or above FL120.

Requires a minimum climb gradient of 6.0% (365 ft/NM) till passing FL120.

**INLOT 2R**

After take-off climb on course 169° until TI506 at or above 3000 ft, then turn RIGHT DCT to INLOT at or above FL120.

Requires a minimum climb gradient of 6.0% (365 ft/NM) to TI506.

**RINAV 2R**

After take-off climb on course 169° until TI506 at or above 3000 ft, then turn RIGHT DCT VOLBI above 9500 ft, then continue on track 008° to RINAV at or above FL120.

Requires a minimum climb gradient of 6.0% (365 ft/NM) to TI506.

**ELBAK 2R**

After take-off climb on course 169° until TI506 at or above 3000 ft, then turn LEFT DCT ELBAK at or above FL120.

Requires a minimum climb gradient of 6.0% (365 ft/NM) till passing FL120.

**ODRAS 2S**

After take-off climb on course 169° until TI506 at or above 3000 ft, turn RIGHT DCT TRN above 7000 ft, then proceed via TI503 above 9000 ft - TI502 above 10000 ft - TI501 - ODRAS at or above FL140.

Requires a minimum climb gradient of 6.0% (365 ft/NM) to TRN.

RNAV SID RWY 17  
TABULAR DESCRIPTION

Serial Number	P&T	Waypoint Name	FO	Track M°	Distance (NM)	Turn Direction	MCA/MCL	Speed Limit (KT)	Navigation Specification
<b>ODRAS 2R</b>									
010	CA	-	-	169	-	-	+6500	-	RNAV 1
020	DF	TI502	-	-	-	L	+10000	-	RNAV 1
030	TF	ODRAS	-	063	7.3	-	+FL140	-	RNAV 1
<b>DIRES 2R</b>									
010	CF	TI506	Y	169	7.8	-	+3000	-	RNAV 1
020	DF	DIRES	-	-	-	R	+FL120	-	RNAV 1
<b>DITAN 2R</b>									
010	CF	TI506	Y	169	7.8	-	+3000	-	RNAV 1
020	DF	DITAN	-	-	-	R	+FL120	-	RNAV 1
<b>INLOT 2R</b>									
010	CF	TI506	Y	169	7.8	-	+3000	-	RNAV 1
020	DF	INLOT	-	-	44.5	R	+FL120	-	RNAV 1
<b>RINAV 2R</b>									
010	CF	TI506	Y	169	7.8	-	+3000	-	RNAV 1
020	DF	VOLBI	-	-	-	R	+9500	-	RNAV 1
030	TF	RINAV	-	008	20.6	R	+FL120	-	RNAV 1
<b>ELBAK 2R</b>									
010	CF	TI506	Y	169	7.8	-	+3000	-	RNAV 1
020	DF	ELBAK	-	-	-	L	+FL120	-	RNAV 1
<b>ODRAS 2S</b>									
010	CF	TI506	Y	169	7.8	-	+3000	-	RNAV 1
020	DF	TRN	-	-	-	R	+7000	-	RNAV 1
030	TF	TI503	-	062	10.0	-	+9000	-	RNAV 1
040	TF	TI502	-	062	5.0	-	+10000	-	RNAV 1
050	TF	TI501	-	063	4.0	-	+FL140	-	RNAV 1
060	TF	ODRAS	-	063	3.3	-	+FL140	-	RNAV 1

WAYPOINT LIST

Waypoint Name	Coordinates
DIRES	410328N 0191133E
DITAN	405644N 0191813E
ELBAK	405151N 0200452E
INLOT	415847N 0192711E
ODRAS	413335N 0201027E
RINAV	415901N 0194718E
TI501	413219N 0200624E
TI502	413047N 0200129E
TI503	412851N 0195521E
TI504	413556N 0194146E
TI505	411633N 0193639E
TI506	411613N 0194423E
TRN	412458N 0194306E