

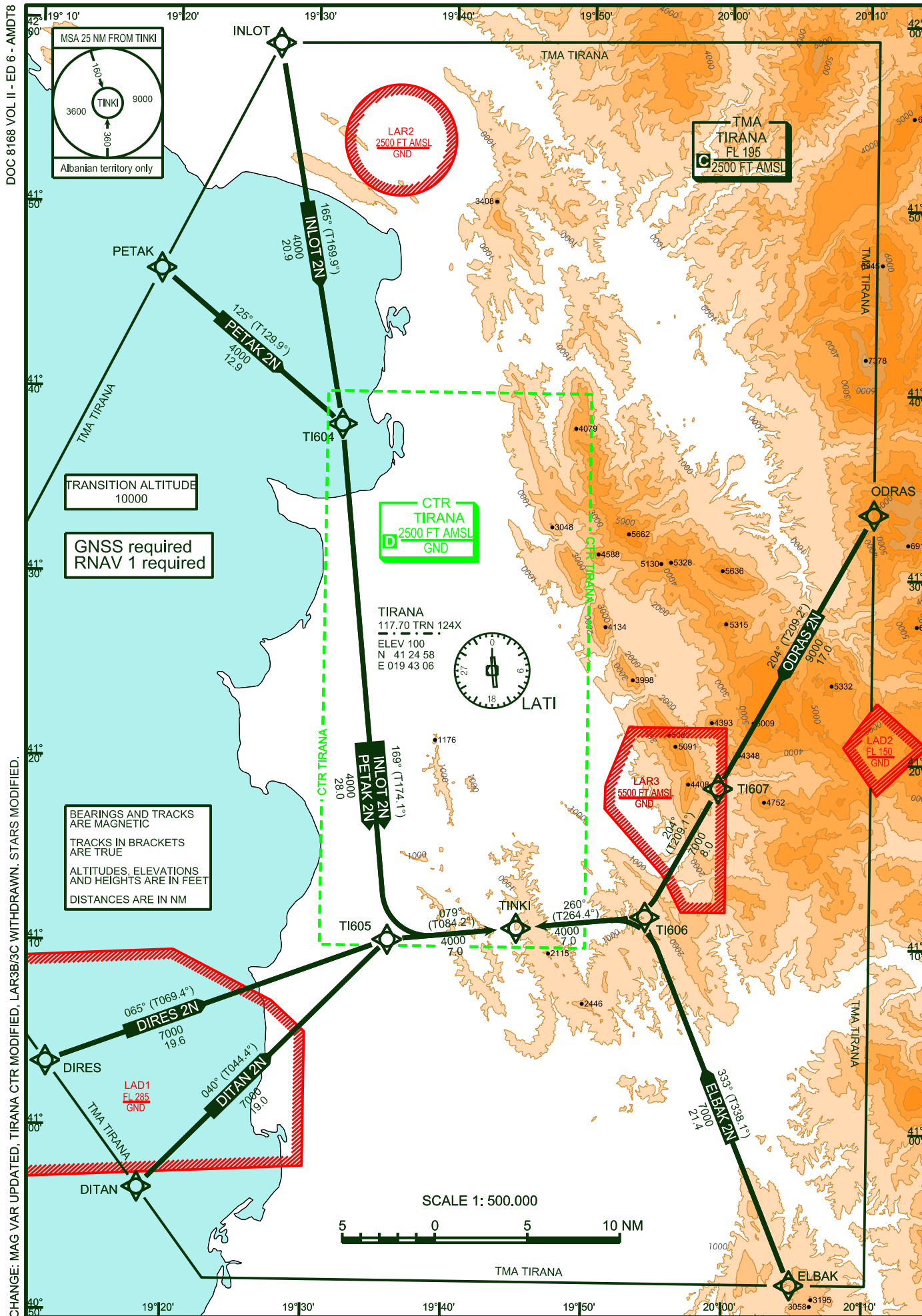
STANDARD ARRIVAL CHART -
INSTRUMENT (STAR) - ICAO

AD ELEV 125 FT

VAR 5° E

RADAR	133.150	127.500
		136.350
TOWER	122.500	123.500
ATIS		132.275

TIRANA, LATI
RNAV STAR RWY 35
ALBANIA



DOC 8168 VOL II - ED 6 - AMDT8
CHANGE: MAG VAR UPDATED, TIRANA CTR MODIFIED, LAR3B/C WITHDRAWN, STARS MODIFIED.

Designator	Route										Remarks
INLOT 2N Inlot two november arrival	INLOT – T1604 – T1605 – TINKI										
RNAV STAR Coding Table of INLOT 2N											
Path Terminator	Identifier	Waypoint		Course/ Track °MAG (° True)	DIST NM	Turn Direction	Constraints		Navigation Specification	Remarks	
		Flyover	Coordinates				Crossing ALT	Speed			
IF	INLOT	no	N415847.00 E0192711.00				F120+		RNAV 1		
TF	T1604	no	N413813.00 E0193204.00	165° (169.9°)	20.9		A4000+		RNAV 1		
TF	T1605	no	N411020.00 E0193551.00	169° (174.1°)	28.0	right	A4000+		RNAV 1		
TF	TINKI	no	N411020.00 E0194504.00	079° (084.2°)	7.0	left	A4000+		RNAV 1		
Designator	Route										Remarks
ODRAS 2N Odras two november arrival	ODRAS – T1607 – T1606 – TINKI										
RNAV STAR Coding Table of ODRAS 2N											
Path Terminator	Identifier	Waypoint		Course/ Track °MAG (° True)	DIST NM	Turn Direction	Constraints		Navigation Specification	Remarks	
		Flyover	Coordinates				Crossing ALT	Speed			
IF	ODRAS	no	N413335.00 E0201027.00				F140+		RNAV 1		
TF	T1607	no	N411843.10 E0195926.23	204° (209.2°)	17.0		A9000+		RNAV 1		
TF	T1606	no	N411443.26 E0195417.19	204° (209.1°)	8.0		A7000+		RNAV 1		
TF	TINKI	no	N411020.00 E0194504.00	260° (264.4°)	7.0	right	A4000+		RNAV 1		
Designator	Route										Remarks
PETAK 2N Petak two november arrival	PETAK – T1604 – T1605 – TINKI										
RNAV STAR Coding Table of PETAK 2N											
Path Terminator	Identifier	Waypoint		Course/ Track °MAG (° True)	DIST NM	Turn Direction	Constraints		Navigation Specification	Remarks	
		Flyover	Coordinates				Crossing ALT	Speed			
IF	PETAK	no	N414631.00 E0191650.00				F120+		RNAV 1		
TF	T1604	no	N413813.00 E0193204.00	125° (129.9°)	12.9		A4000+		RNAV 1		
TF	T1605	no	N411020.00 E0193551.00	169° (174.1°)	28.0	right	A4000+		RNAV 1		
TF	TINKI	no	N411020.00 E0194504.00	079° (084.2°)	7.0	left	A4000+		RNAV 1		

Designator	Route										Remarks
DIRES 2N Dires two november arrival	DIRES – T1605 – TINKI										
RNAV STAR Coding Table of DIRES 2N											
Path Terminator	Identifier	Waypoint		Course/ Track °MAG (° True)	DIST NM	Turn Direction	Constraints		Navigation Specification	Remarks	
		Flyover	Coordinates				Crossing ALT	Speed			
IF	DIRES	no	N410328.00 E0191133.00				F120+		RNAV 1		
TF	T1605	no	N411020.00 E0193551.00	065° (069.4°)	19.6		A7000+		RNAV 1		
TF	TINKI	no	N411020.00 E0194604.00	079° (084.2°)	7.0	right	A4000+		RNAV 1		
Designator	Route										Remarks
DITAN 2N Ditan two november arrival	DITAN – T1605 – TINKI										
RNAV STAR Coding Table of DITAN 2N											
Path Terminator	Identifier	Waypoint		Course/ Track °MAG (° True)	DIST NM	Turn Direction	Constraints		Navigation Specification	Remarks	
		Flyover	Coordinates				Crossing ALT	Speed			
IF	DITAN	no	N405644.00 E0191813.00				F120+		RNAV 1		
TF	T1605	no	N411020.00 E0193551.00	040° (044.4°)	19.0		A7000+		RNAV 1		
TF	TINKI	no	N411020.00 E0194604.00	079° (084.2°)	7.0	right	A4000+		RNAV 1		
Designator	Route										Remarks
ELBAK 2N Elbak two november arrival	ELBAK – T1606 – TINKI										
RNAV STAR Coding Table of ELBAK 2N											
Path Terminator	Identifier	Waypoint		Course/ Track °MAG (° True)	DIST NM	Turn Direction	Constraints		Navigation Specification	Remarks	
		Flyover	Coordinates				Crossing ALT	Speed			
IF	ELBAK	no	N405151.00 E0200452.00				F120+		RNAV 1		
TF	T1606	no	N411443.26 E0195417.19	333° (338.1°)	21.4		A7000+		RNAV 1		
TF	TINKI	no	N411020.00 E0194504.00	260° (264.4°)	7.0	left	A4000+		RNAV 1		